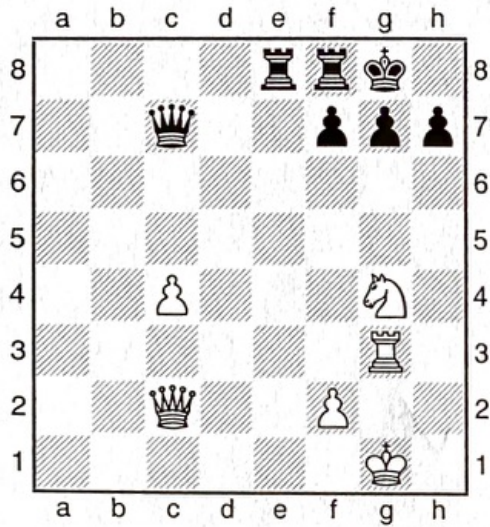
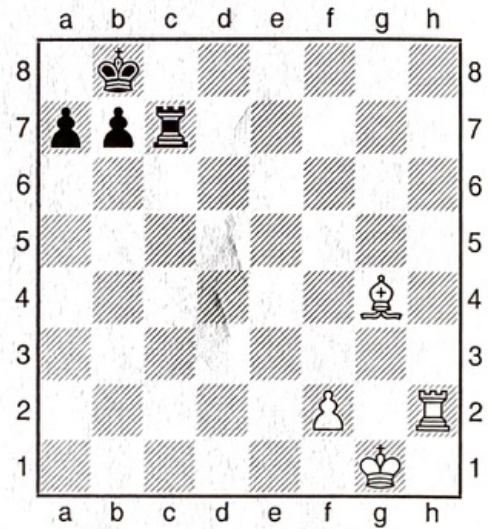


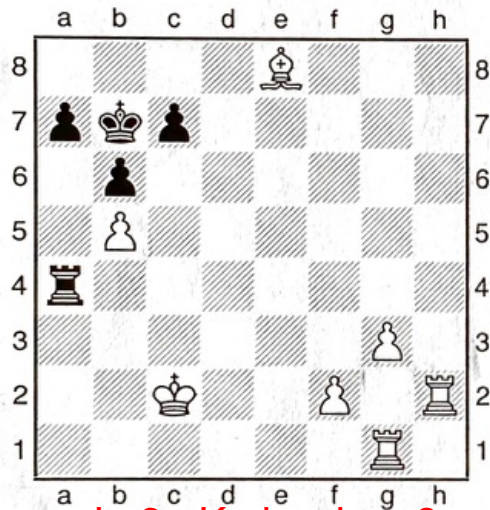
2.06 Weiß setzt Matt in 2 Zügen



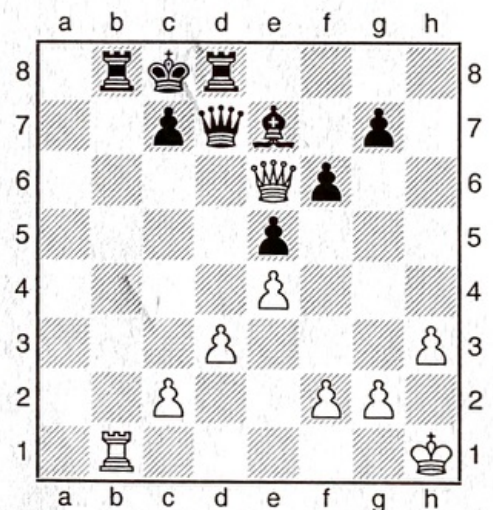
Sf6+ Kh8 061
Dxh7#



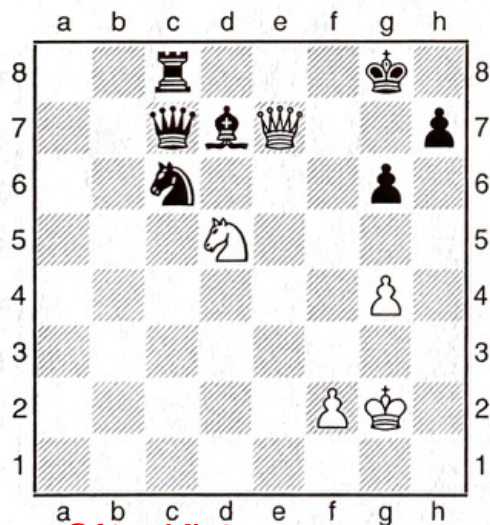
Th8+ Tc8 062
Txc8#



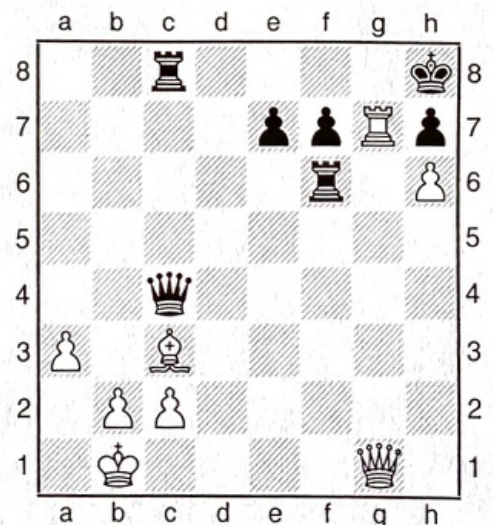
Lc6+ Ka,b oder c8
Th8# 063



Da6+ Tb7 064
Dxb7#



Sf6+ Kh8 065
Dxh7#



Txh7+ Kxh7 066
Dg7#